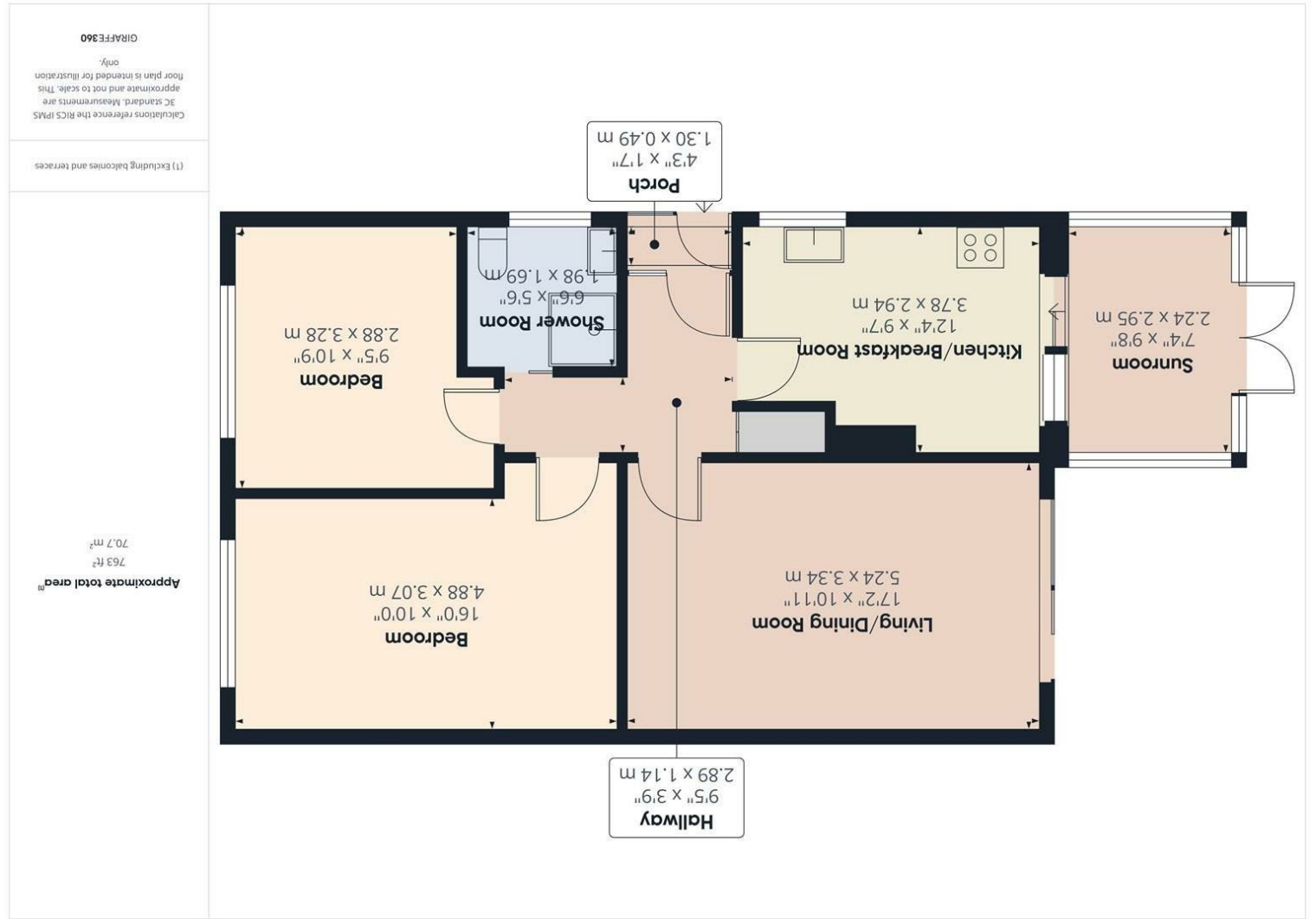


Consumer Protection from Unfair Trading Regulations 2008 We have not tested any apparatus, equipment, fittings or services and so cannot verify that they are in working order or fit for purpose. You are advised to obtain verification from your solicitor or surveyor. References to the tenure of a property are based on information supplied by the seller. We have not had sight of the title documents and a buyer is advised to obtain verification from their solicitor. Items shown in photographs are not included unless specifically mentioned within the sales particulars, but may be available by separate negotiation. We advise you to book an appointment to view before embarking on any journey to see a property, and check its availability.



- Hallway 9'5" x 4'4" (2.89 x 1.34)
- Living/Dining Room 17'2" x 10'11" (5.24 x 3.34)
- Kitchen/Breakfast Room 12'4" x 9'7" (3.78 x 2.94)
- Conservatory 7'4" x 9'8" (2.24 x 2.95)
- Bedroom 16'0" x 10'0" (4.88 x 3.07)
- Bedroom 9'5" x 10'9" (2.88 x 3.28)
- Shower Room 6'5" x 5'6" (1.98 x 1.69)



- Living/dining room
- Kitchen/breakfast room
- Conservatory
- Two bedrooms
- Shower room
- Parking for several vehicles
- Offered for sale with no onward chain!

PROPERTY TYPE Bungalow - Semi

Detached

BEDROOMS 2

RECEPTION ROOMS 1

BATHROOMS 1

EPC RATING D

COUNCIL TAX BAND C



Two bedroom semi detached bungalow set in corner plot in popular, convenient location.

Entrance hallway, lounge/diner, kitchen and conservatory, two double bedrooms and a shower room.

With good sized corner garden and off street parking.

Offered for sale with no onward chain!



the location

Set in popular, convenient location a short walk from the facilities of Hanham high street, bus routes and the green wooded walks of Vicarage Road playing fields and Hencliffe woods are literally on the doorstep. Bristol 3.3 miles Bath 9.4 miles



Offered for sale with no onward chain!

just a thought...

Although requiring some updating this well placed bungalow offers a rare opportunity in a popular location. This is one not to be missed!